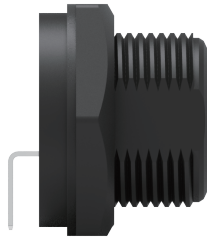


Cable/Panel

05
I/O



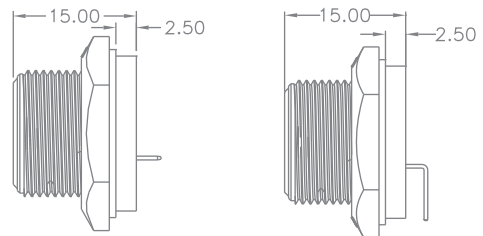
Technical Characteristics

- Shell material : PBT / PA66
- Housing material : Nylon PA66
- Molding material : PVC / TPU
- Contact : Copper Alloy
- Insulation resistance : DC500V ± 10%
- Current Rating : 1.0A
- Recommend AWG : 22~28AWG
- Protection level : IP67
- Panel Mount Connector : -40°C~+105°C
- Cable End Connector : -40°C~+80°C

Panel Cut-out



Panel Signal



Part Numbering System

