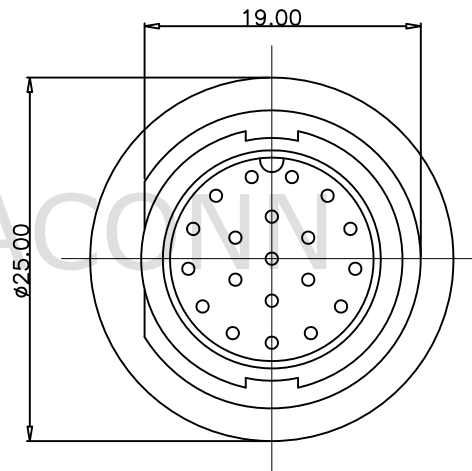


REV.	ECN NO.	DATE	SIGN	DESCRIPTION
01	Initial Release	2021/09/07	YU-FEI	New Item



- Note:
- \* IP Grade: IP67
  - \* Rated current: 2A
  - \* Rated voltage: 250V

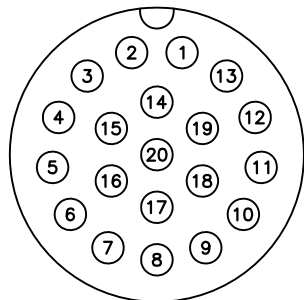
4		Nut: Nylon+GF,Black	1
3	Circular Middle(Lock) Male (2A)	Gasket: Rubber	1
2		Pin: Copper Alloy,Gold Plated	20
1		Housing: Nylon+GF,Black	1
NO.	ITEM	SPEC	QTY

# BOM LIST

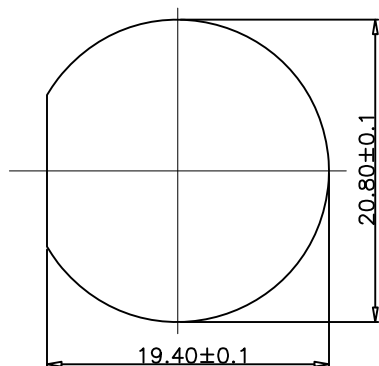


<div> <div> </div> <div> </div> </div>	All dimension in mm	
	TOLERANCE UNLESS OTHERWISE SPECIFIED	REV. 01
	±0.5	SCALE 1:1

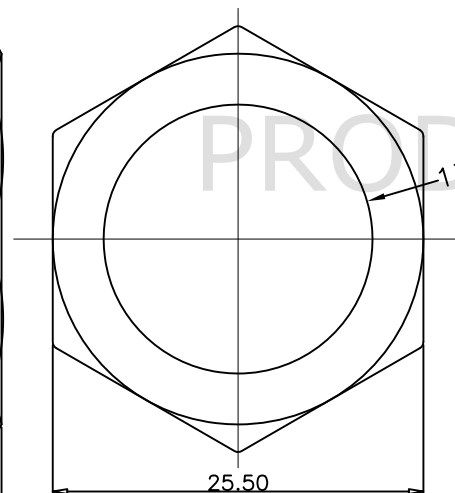
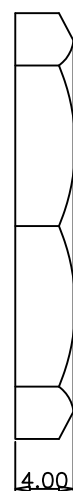
DRAWN BY	YU-FEI	APPROVED BY	Roy	DATE(Y/M/D)	2021/09/07	PAGE	1/1	SIZE	A4
PART NO:	CCU20-MMPF-LS0-F0			TITLE					
CUSTOMER NO:				CIRCULAR MIDDLE(LOCK),PANEL					
THIS DOCUMENT IS CONFIDENTIAL AND A PROPERTY OF PRODACONN DISCLOSURE TO THIRD PARTY HAS TO BE AUTHORIZED BY PRODACONN									



Pin Assignments  
Front View



Recommend  
Panel Cut-Out



NUT

