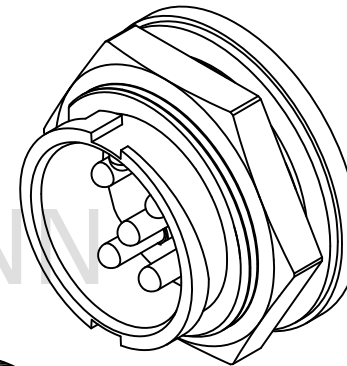
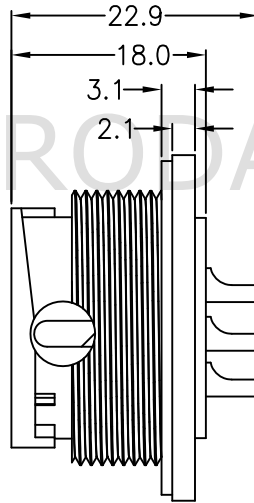
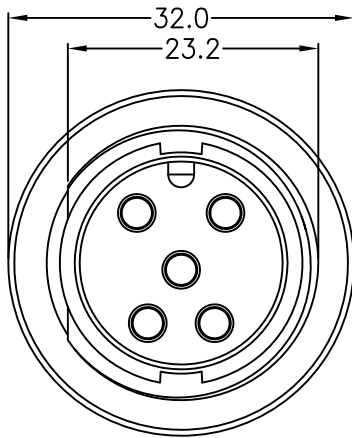


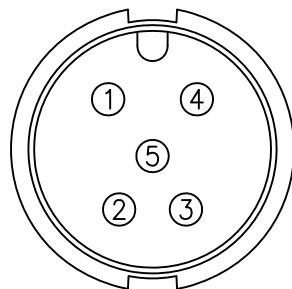
REV.	ECN NO.	DATE	SIGN	DESCRIPTION
01	Initial Release	2021/09/01	YU-FEI	New Item



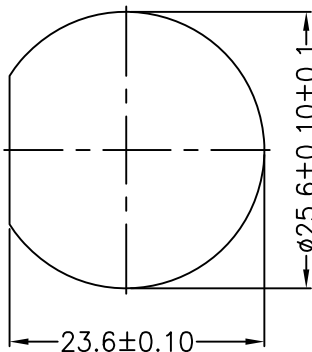
Note:

- \* IP Grade: IP67
- \* Rated current: 20A
- \* Rated voltage: 300V

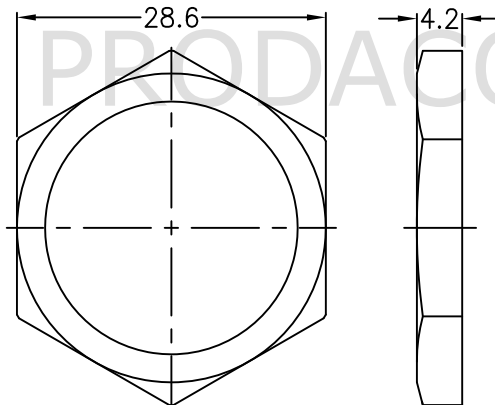
4		Hex Nut: Nylon	1
3		Gasket: Rubber	1
2	CIRCULAR LARGE PANEL	Pin: Copper Alloy,Gold Plated	5
1		Housing: Nylon,Black	1
NO.	ITEM	SPEC	QTY




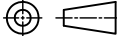
Pin Assignments  
Front View



RECOMMENDED  
PANEL CUT-OUT



Hex Nut

BOM LIST				
 <b>PRODACONN</b>		 All dimension in mm  TOLERANCE UNLESS OTHERWISE SPECIFIED  ±0.5	REV. 01	
			SCALE 1:1	
DRAWN BY YU-FEI	APPROVED BY Roy	DATE(Y/M/D) 2021/09/01	PAGE 1/1	SIZE A4
PART NO: CDC05-MMPF-LS0-F0		TITLE CIRCULAR LARGE PANEL(LOCK)		
CUSTOMER NO:				
THIS DOCUMENT IS CONFIDENTIAL AND A PROPERTY OF PRODACONN. DISCLOSURE TO THIRD PARTY HAS TO BE AUTHORIZED BY PRODACONN				