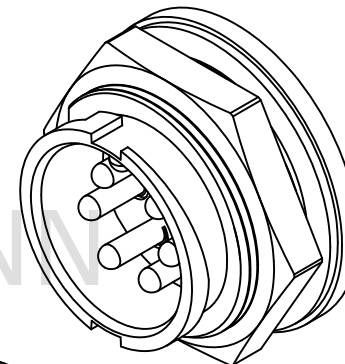
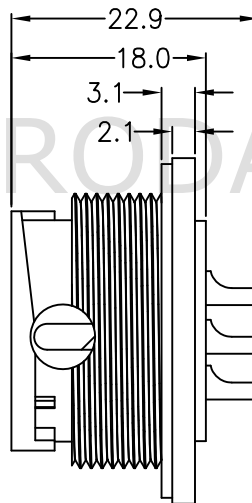
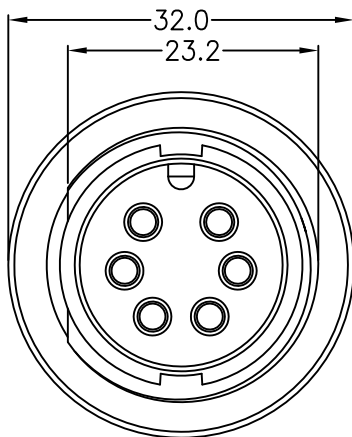
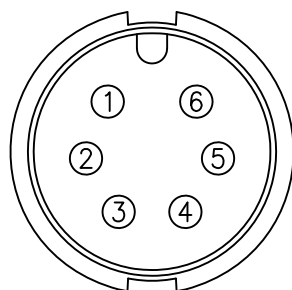


| REV. | ECN NO. | DATE | SIGN | DESCRIPTION |
|------|-----------------|------------|--------|-------------|
| 01 | Initial Release | 2021/09/01 | YU-FEI | New Item |
| | | | | |
| | | | | |

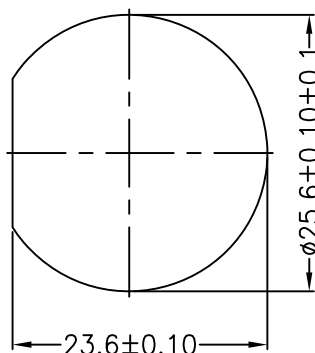


Note:
 * IP Grade: IP67
 * Rated current: 20A
 * Rated voltage: 300V

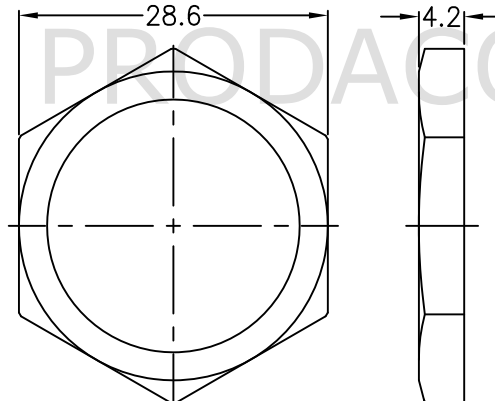
| 4 | CIRCULAR LARGE PANEL | Hex Nut: Nylon | 1 |
|-----|----------------------|-------------------------------|-----|
| 3 | | Gasket: Rubber | 1 |
| 2 | | Pin: Copper Alloy,Gold Plated | 6 |
| 1 | | Housing: Nylon,Black | 1 |
| NO. | ITEM | SPEC | QTY |




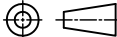
Pin Assignments
Front View



RECOMMENDED
PANEL CUT-OUT



Hex Nut

| BOM LIST | | | | |
|--|--|---|---|-------------------------------|
|  PRODACONN | | |  All dimension in mm | |
| | | | TOLERANCE UNLESS OTHERWISE SPECIFIED ±0.5 | |
| DRAWN BY YU-FEI | | APPROVED BY Roy | | DATE(Y/M/D) 2021/09/01 |
| PART NO: CDC06-MMPF-LS0-F0 | | TITLE CIRCULAR LARGE PANEL(LOCK) | | |
| CUSTOMER NO: | | | | |
| THIS DOCUMENT IS CONFIDENTIAL AND A PROPERTY OF PRODACONN. DISCLOSURE TO THIRD PARTY HAS TO BE AUTHORIZED BY PRODACONN | | | | |